

EL MOUTAKHASSIS PETROLEUM SERVICES

www.eps-ly.com



✉ smail.kiouas@eps-ly.com

☎ +218 92-5095560

✉ derradji@eps-ly.com

Table of contents

1. Overview

- 1.1. Main Data
- 1.2. Commercial Area
- 1.3. Strategy

2. Organization

- 2.1. EPS Organization Chart
- 2.2. Personnel Qualifications
- 2.3. EPS Certification

3. EPS Services

4. EPS Selected Customers



✉ smail.kiouas@eps-ly.com

☎ +218 92-5095560

✉ derradji@eps-ly.com



1.1. Main Data



Name: EPS (EL MOUTAKHASSIS PETROLEUM SERVICES)

Type of Company: EURL

Phone Number: +218 92-5095560

Email: contact@eps-ly.com

Web: www.eps-ly.com

Head Office Address: Tripoli Souk Al Joumoua LIBYE

Adresse du bureau en Hassi Messaoud : Tripoli Souk Al Joumoua LIBYE

Activities: Inspection & Contrôle Services (CND, APG/APV, APL et APE)
and Laboratory Calibration (meeting solutions).

1.2. Commercial Area



1. Overview

1.3. Strategy

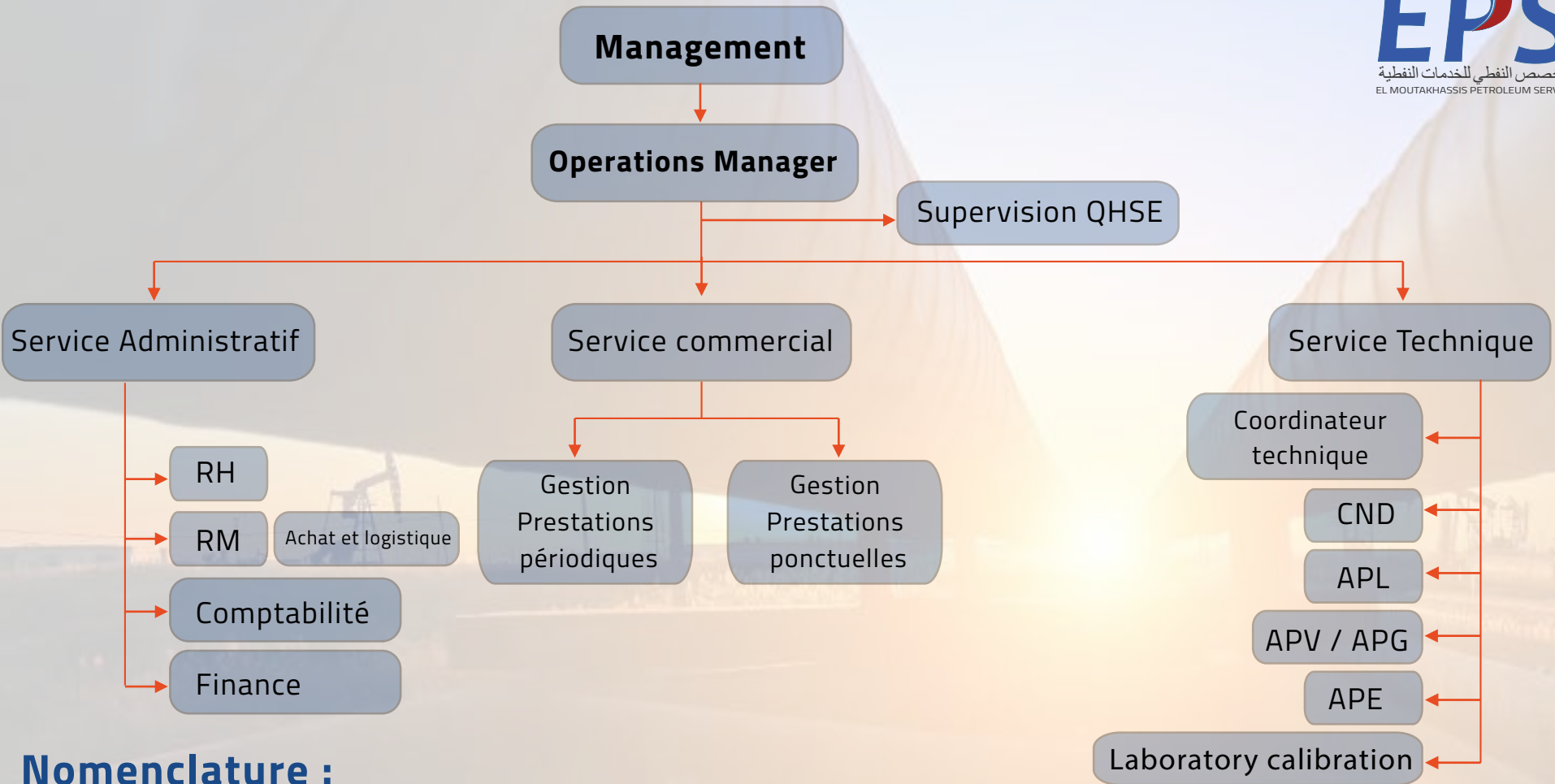


EPS (EL MOUTAKHASSIS PETROLEUM SERVICES) is an independent inspection and testing company provide a wide range of services to clients within the Oil & Gas industry.

Main priority is to ensure and maintain our Customer satisfaction and loyalty

Our legitimate ambition is to be the African leading Inspection & Control and calibration Company through our continuous research, development and inspector training programs.

EPS Organization Chart

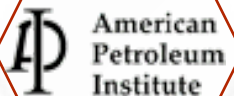


Nomenclature :

RM : Ressources matérielles **RH** : Ressources humaines **QHSE** : Qualité, Hygiène, Sécurité et Environnement **CND** : Contrôles Non Destructif **APL** : Contrôles des appareils de levage **APE** : Contrôles des appareils Electrique **APG** : Contrôles des appareils à Gaz **APV** : Contrôles des appareils à Vapeur

2.2. Personnel Qualifications

DS1



EPS makes at your disposal a skilled and experienced team of engineers & Inspectors Certified in various methods :

- Non Destructive Testing (NDT) According to ACCP, ASNT & EN 473
- Authorized Inspectors: API 653, API 510 & API 570

2.3. EPS Certification

A large offshore oil platform with yellow and white structures, situated in the ocean under a blue sky. The platform features multiple levels, pipes, and a crane. The image is partially obscured by a dark blue and yellow geometric overlay on the left side.

EPS is certified according to :

- ✔ ISO 9001/2015 : Quality management systems
- ✔ ISO 17020 / 2012 : Accréditation as per international Standard
- ✔ ISO 17025 / 2017 : Accréditation as per international Standard
- ✔ ISO 14001/2015 : Environmental management (ongoing)
- ✔ ISO 45001 /2018: Occupational health and safety management (ongoing)

In order to satisfy the requirements of our costumers OPS has opted for the Accreditation ISO/IEC 17020/2012 & 17025/2017 with ALGERAC)

2.3. EPS Certification



3. EPS Services



EPS services are available through a network of branch offices in Libya and Algeria. Our field support services include

- ✔ Non Destructive testing (NDT)
- ✔ Lifting Inspection (APL)
- ✔ Pressure Test (APG/APV)
- ✔ Regulatory control of electrical installations (APE)
- ✔ Meetring solution services (Laboratory calibration)

3.1- Non-Destructive Testing (NDT)

EPS support their client on prior to perform full Drilling Rigs inspection including surface equipments, DP, Tubing and BHA in order to identify failures on them with following methods:

- Ultrasonic & wall thickness inspection (UT)
- Endoscopy Testing (L :30m).
- Dimensional, OD gauging & Drifting.
- Visual Inspection Testing (VT).
- Magnetic Particle Testing (MT)
- Liquid Penetrate Testing (PT)



3.2- Lifting Inspection (APL)

We are one of the inspection, control, verification and certification companies of all types of cranes, lifting devices and accessories. Our inspection services are:

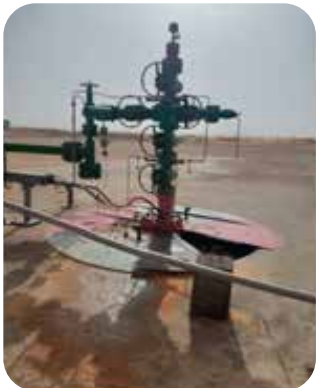
- Verification and inspection of all lifting equipment.
- Live and Dead load tests.
- Verification of crane beams, rails and overhead crane columns.
- Non-destructive check of the hooks to identify cracks.
- Visual inspections of substructures déformations.
- Re-examination of all safety devices.
- Pre-shipment inspection. - Loading and offloading inspection.



3.3- Pressure Test (APG/APV)

EL MOUTAKHASSIS PETROLEUM SERVICES conduct hydrostatic tests with HP pumps to identify leaks and durability to hold the desired pressure using high pressure pumps up to 20 000 psi. Our services included:

- Pressure equipments testing in site or workshop.
- Witness while pressure tests in site.
- Quality assurance and Quality Control (QA/QC).
- Tank calibration.
- Gauges Calibration using Dead Weight Tester.



3.4-1 Regulatory control of electrical installations (APE)

Prior to ensure protection of peoples, properties and environment, we support our customers throughout the life cycle of their installations and equipments to check the conformity of their electrical installation.

Oasis Petroleum services (**EPS**) offers large range of inspection, control, testing and technical support services such as:

- Inspection and regulatory control of LV, HV electrical installations in a periodic preventive framework or callout request from customer.
- Delivery certificates and attestations of compliance as per safety & quality control standards of electrical installations, instrumentation equipment.
- Examination, verification and validation of basic and detailed studies of various industrial projects.
- Supervision of electrical / instrumentation work in progress

3.4-2 Regulatory control of electrical installations (APE)

- Assistance with FAT (Factory Acceptance Test) factory acceptance according to international standards and norms.
- Assistance with the reception and commissioning of the electrical / instrumentation installations on the customer's site SAT (Site Acceptance Test).
- Assistance in the technical control of preventive maintenance shutdowns of industrial installations.



3.5-1 Meeting solution services (Laboratory calibration)

EL MOUTAKHASSIS PETROLEUM SERVICES is able to carry out in the laboratory and on site (Refineries, CPFs and power plants) the calibration and verification of the following measurement parameters:

- 1-Mass & Weigh:** Industrial weighing machine & instrument precision of electrical weigh.
- 2-Pressure:** Manometer, pressure transmitter, pressure switch, PRV, etc.
- 3-Temperature:** thermometer, digital thermometer, probe, regulator, measuring oven.
- 4-Torque & Force:** Torque wrench (on-site calibration available).
- 5-Flow:** control, verification and calibration of flow-meters on site.
- 6- Electricity:** Assistance with the pre-reception and commissioning of electrical installations / instrumentation on the customer's site SAT (Site Acceptance Test).

3.5-2 Meeting solution services (Laboratory calibration)

Calibration involves comparing the values measured by the device being calibrated with that of a reference device (also called a standard) under specific conditions. Other important aspects of calibration include documenting the recorded deviation between the measuring device and the reference device, calculating the resulting measurement uncertainty, and creating the calibration certificate specifying this uncertainty.



4. Our Main Clients





مليته النفط والغاز
Mellitah Oil & Gas



اكاكوس للعمليات النفطية
Akakus Oil Operations





- ✓
- ✓
- ✓
- ✓



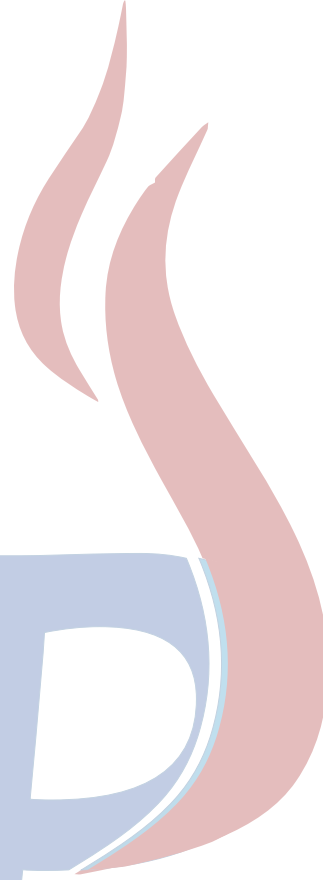
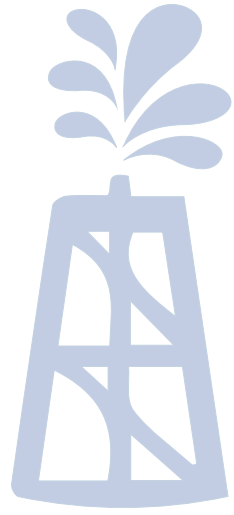
- ✓
- ✓
- ✓
- ✓



- ✓
- ✓
- ✓
- ✓



- ✓
- ✓
- ✓
- ✓
- ✓



E P S

Thank you for your kind attention

المتخصص في الخدمات النفطية

EL MOUTAKHASSIS PETROLEUM SERVICES